



<http://www.canon.com/c-park/en/>



View of completed model

The Parthenon, Greece

Built in the days of ancient Greece, the Parthenon has looked over the citizens of Athens from atop the Acropolis for more than 2,000 years. Constructed using the Grecian Doric order of architecture, with a structure surrounded by columns with no column foundation, it is said that even in its day the Parthenon was the only structure in the world that combined Doric-order columns with the Ionic-order columns visible in the rear.

*This model was designed for Papercraft and may differ from the original in some respects.

■ Parts list(pattern):Twelve A4 sheets(No.1 to No.12)

■ No. of Parts:88

*Build the model by carefully reading the Assembly Instructions, in the parts sheet page order.

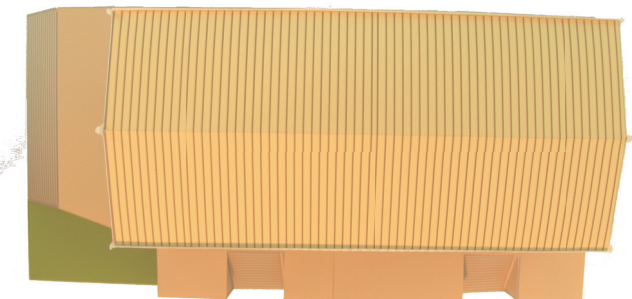
Front view



Side view



Overhead view

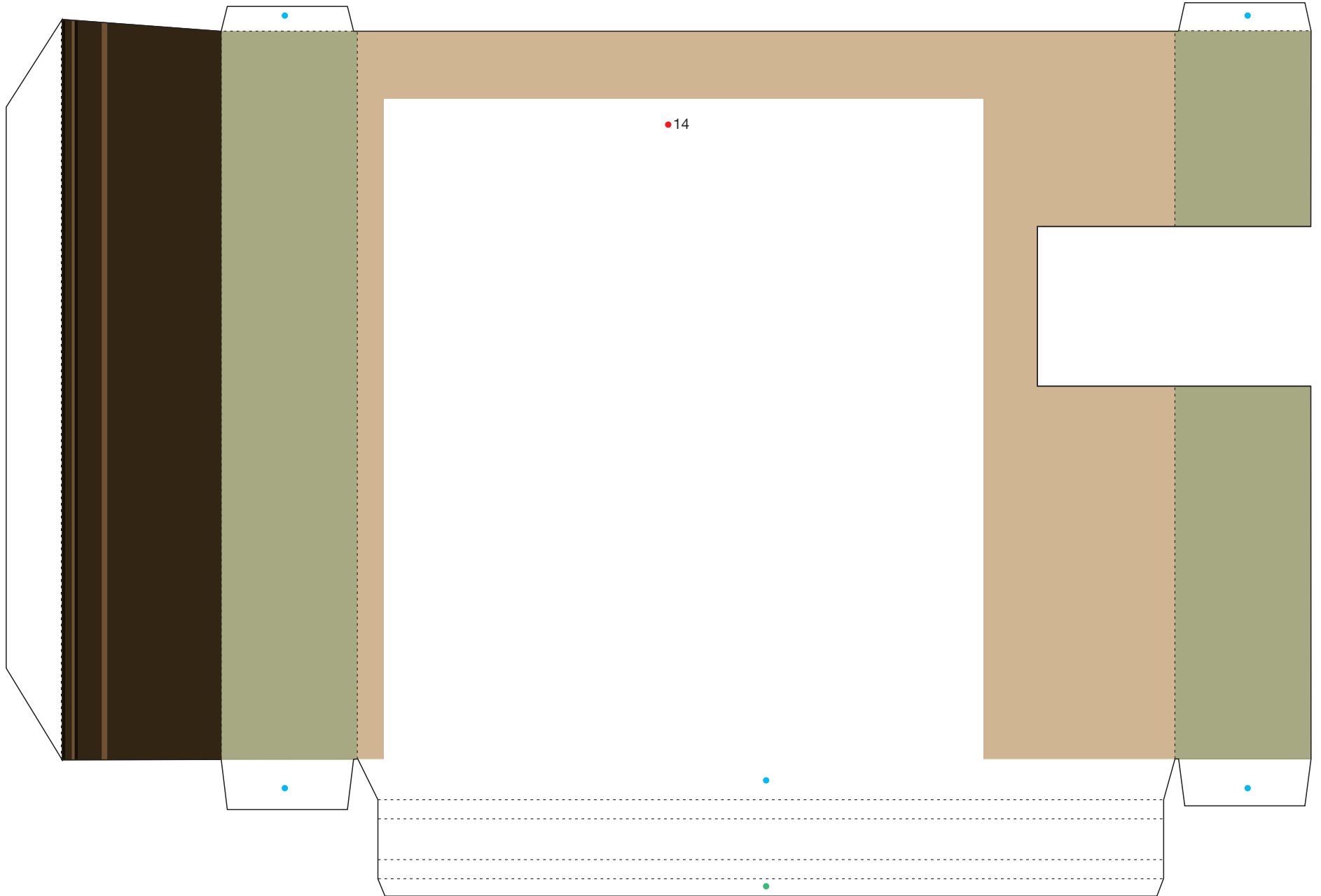


The Parthenon, Greece: Pattern

Canon ® is a registered trademark of Canon Inc. © Canon Inc. © A & A Co., Ltd.



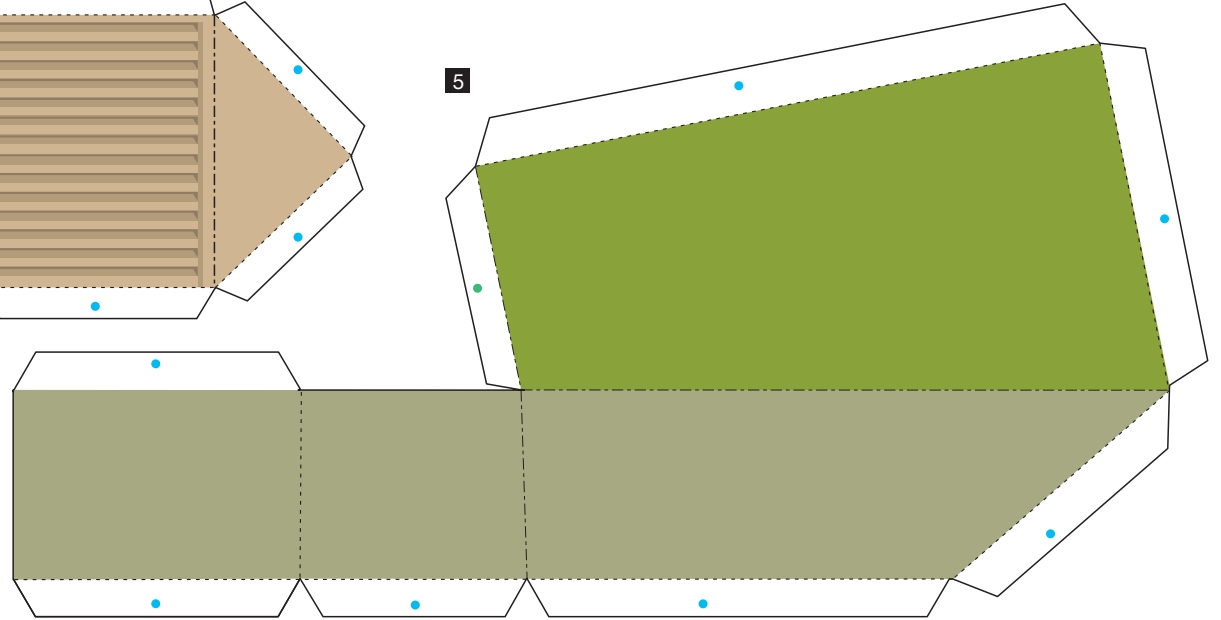
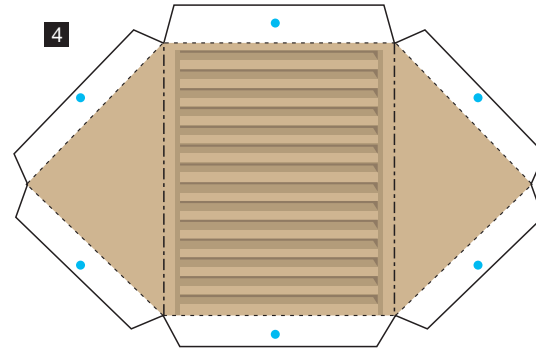
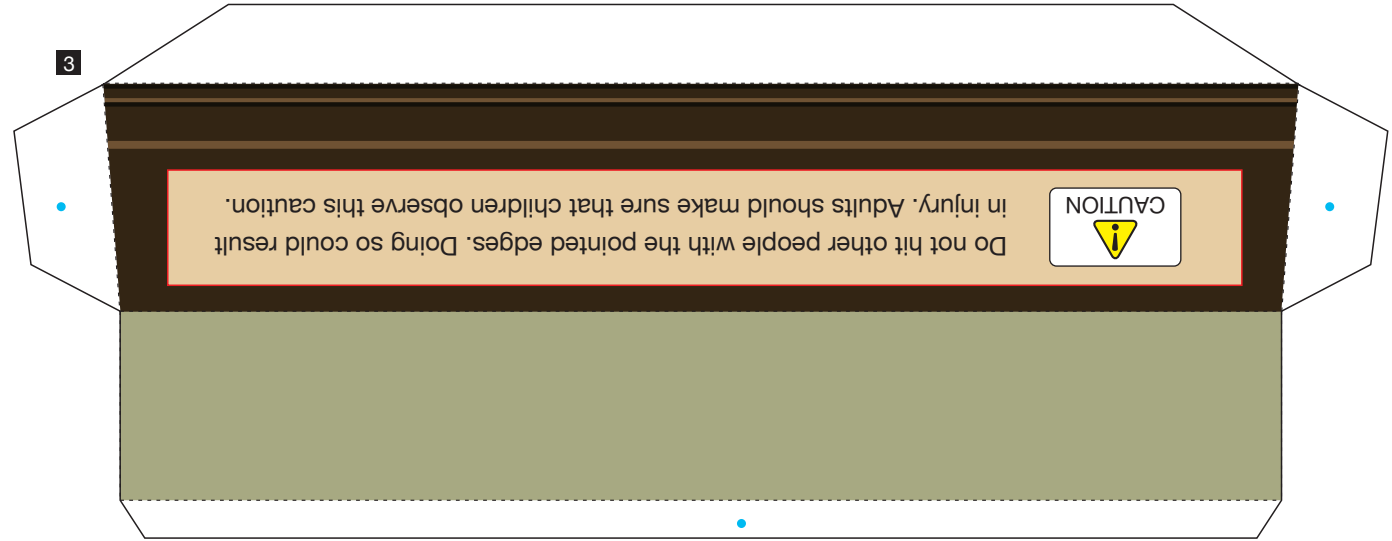
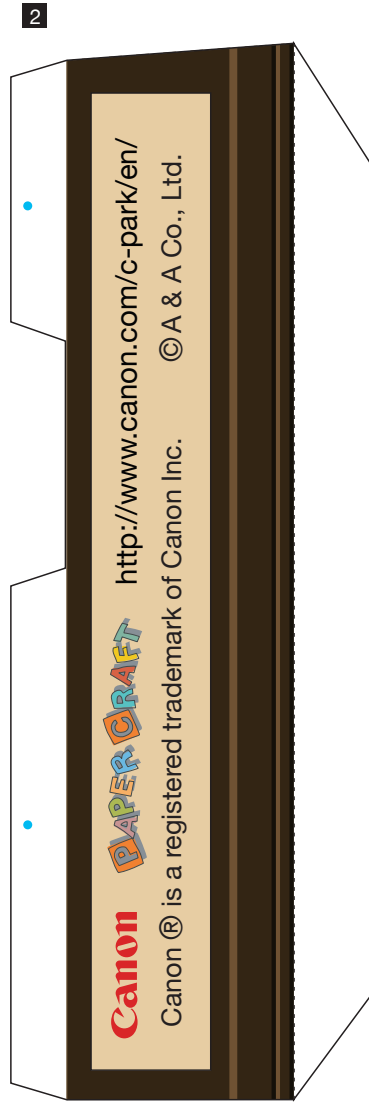
1



2

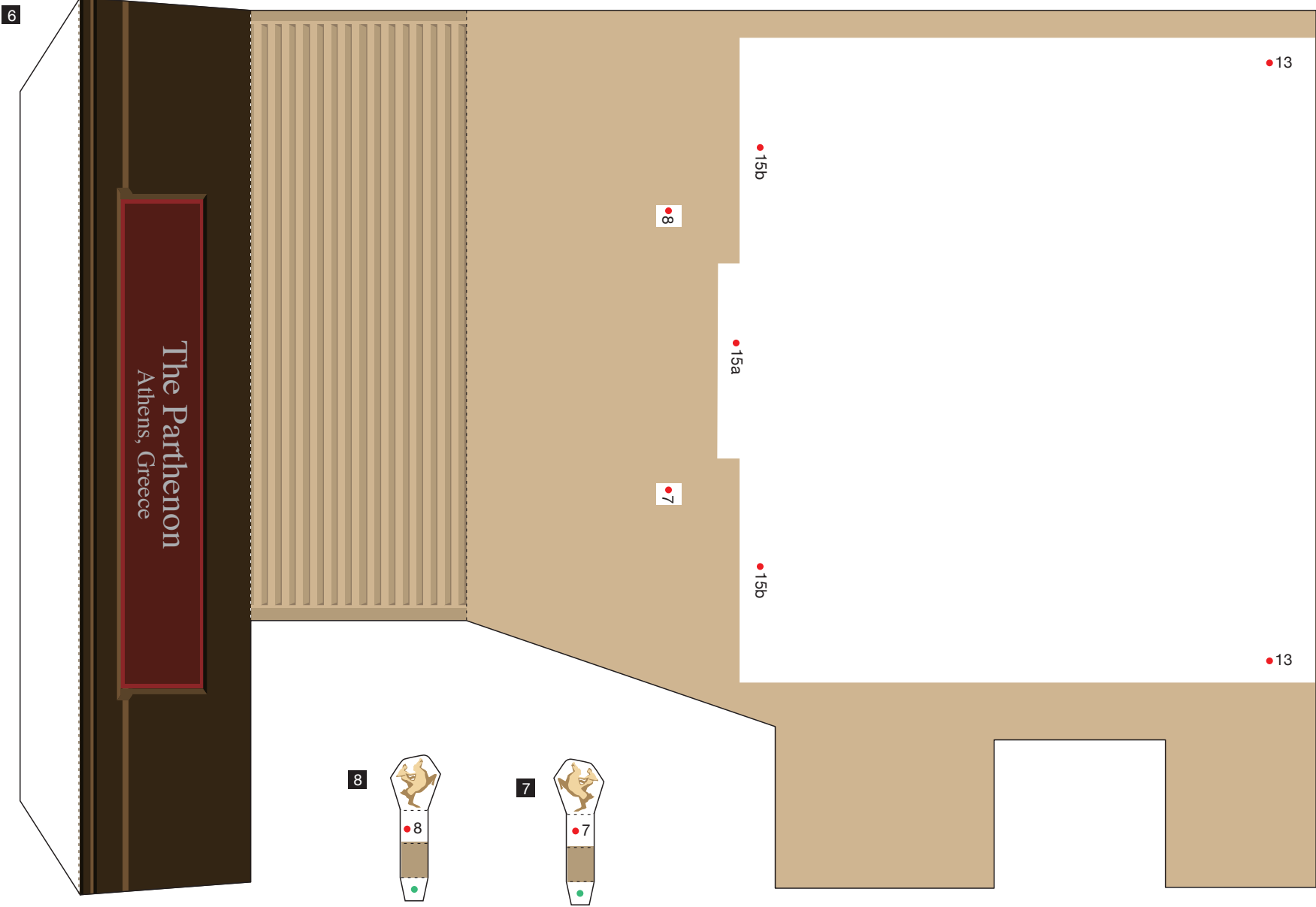
The Parthenon, Greece: Pattern

Canon ® is a registered trademark of Canon Inc. © Canon Inc. © A & A Co., Ltd.



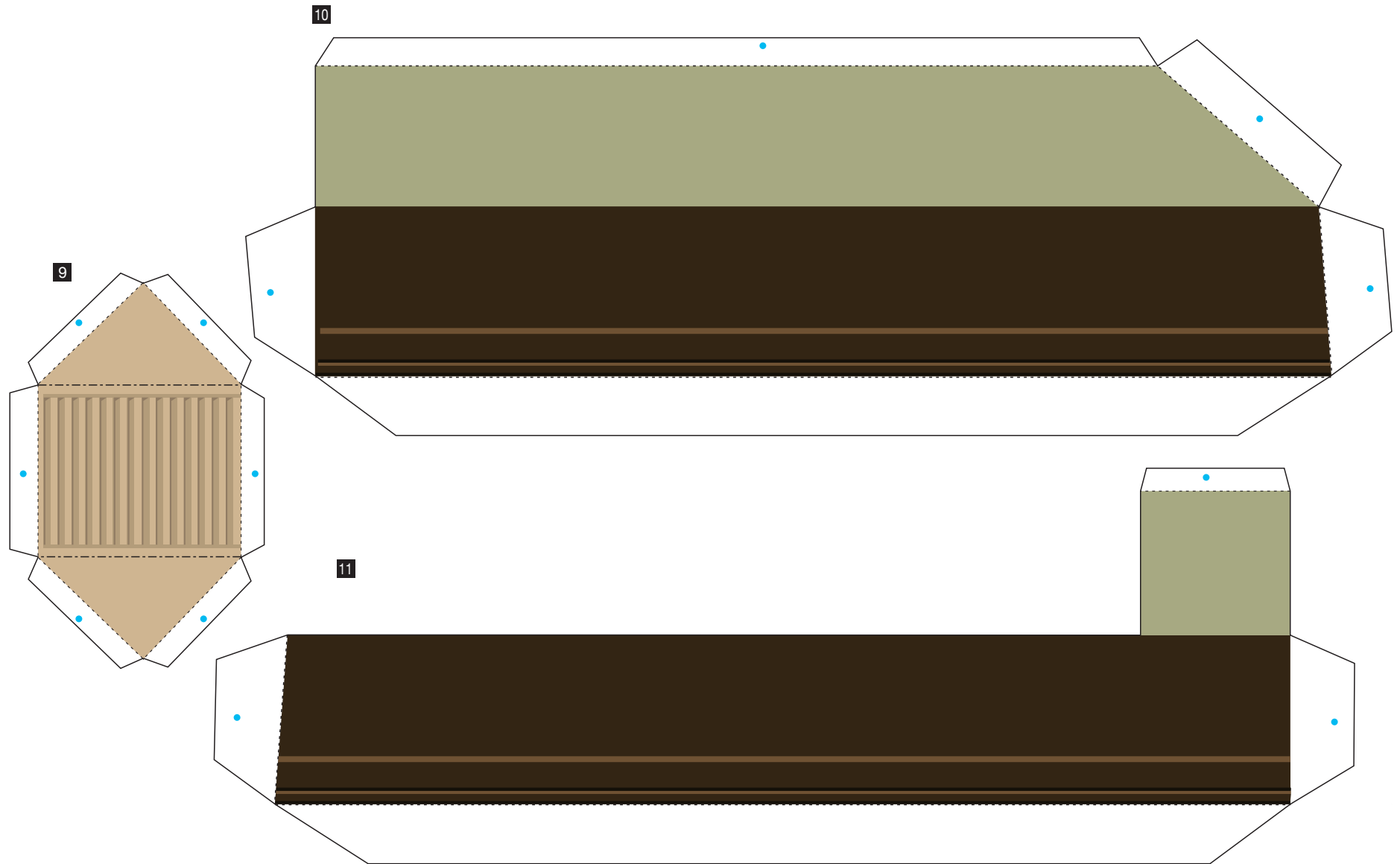
The Parthenon, Greece: Pattern

Canon ® is a registered trademark of Canon Inc. © Canon Inc. © A & A Co., Ltd.



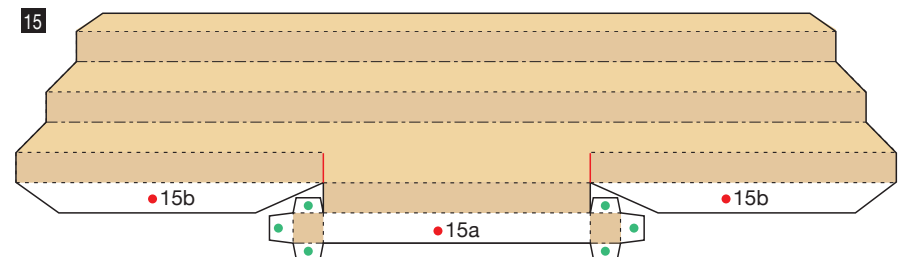
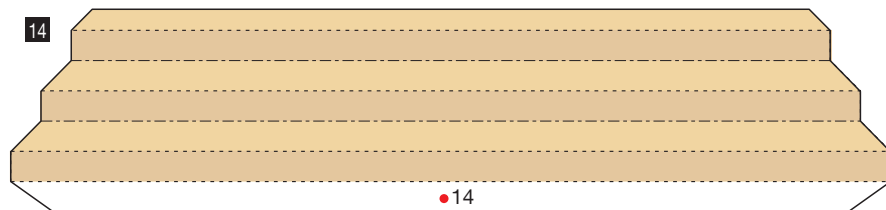
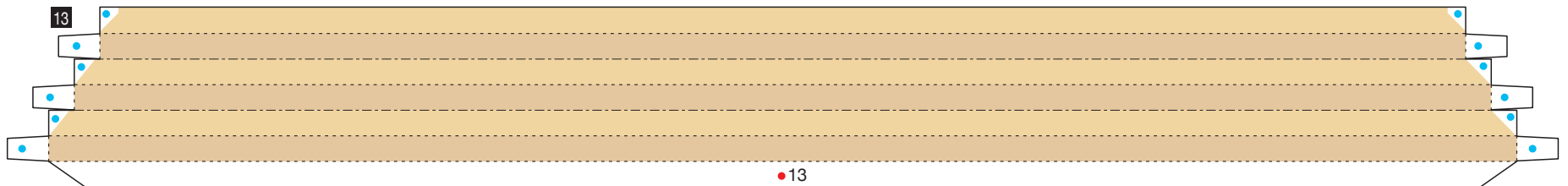
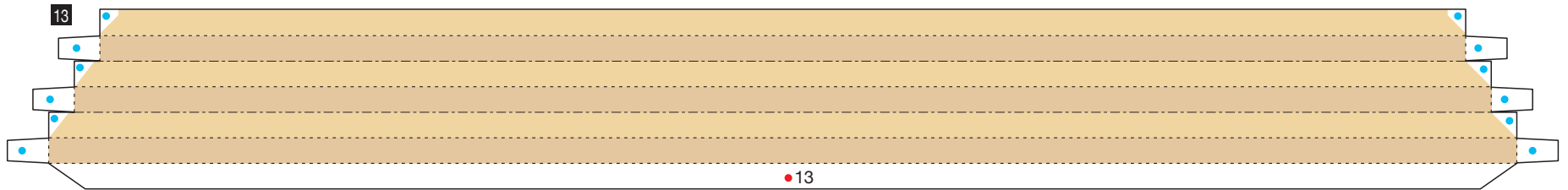
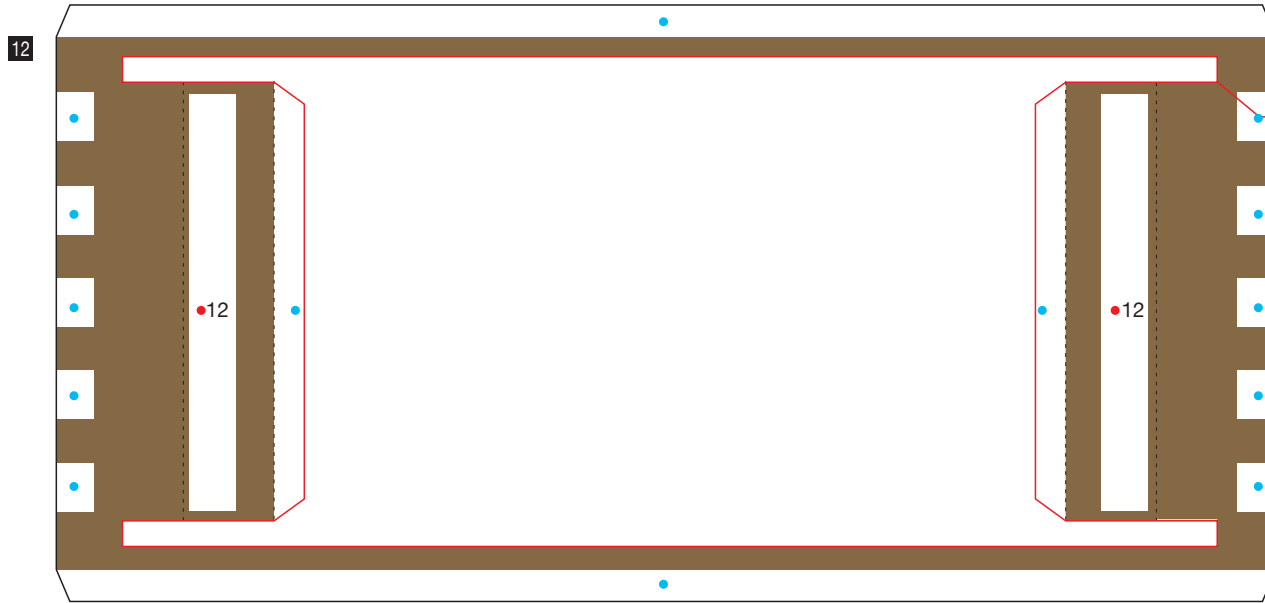
The Parthenon, Greece: Pattern

Canon ® is a registered trademark of Canon Inc. © Canon Inc. © A & A Co., Ltd.



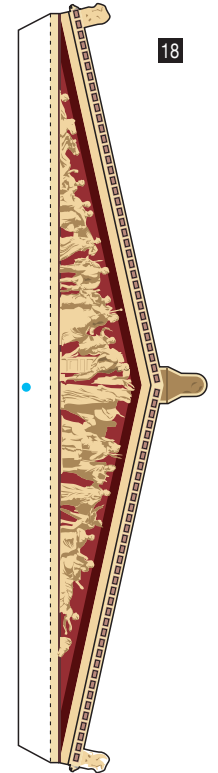
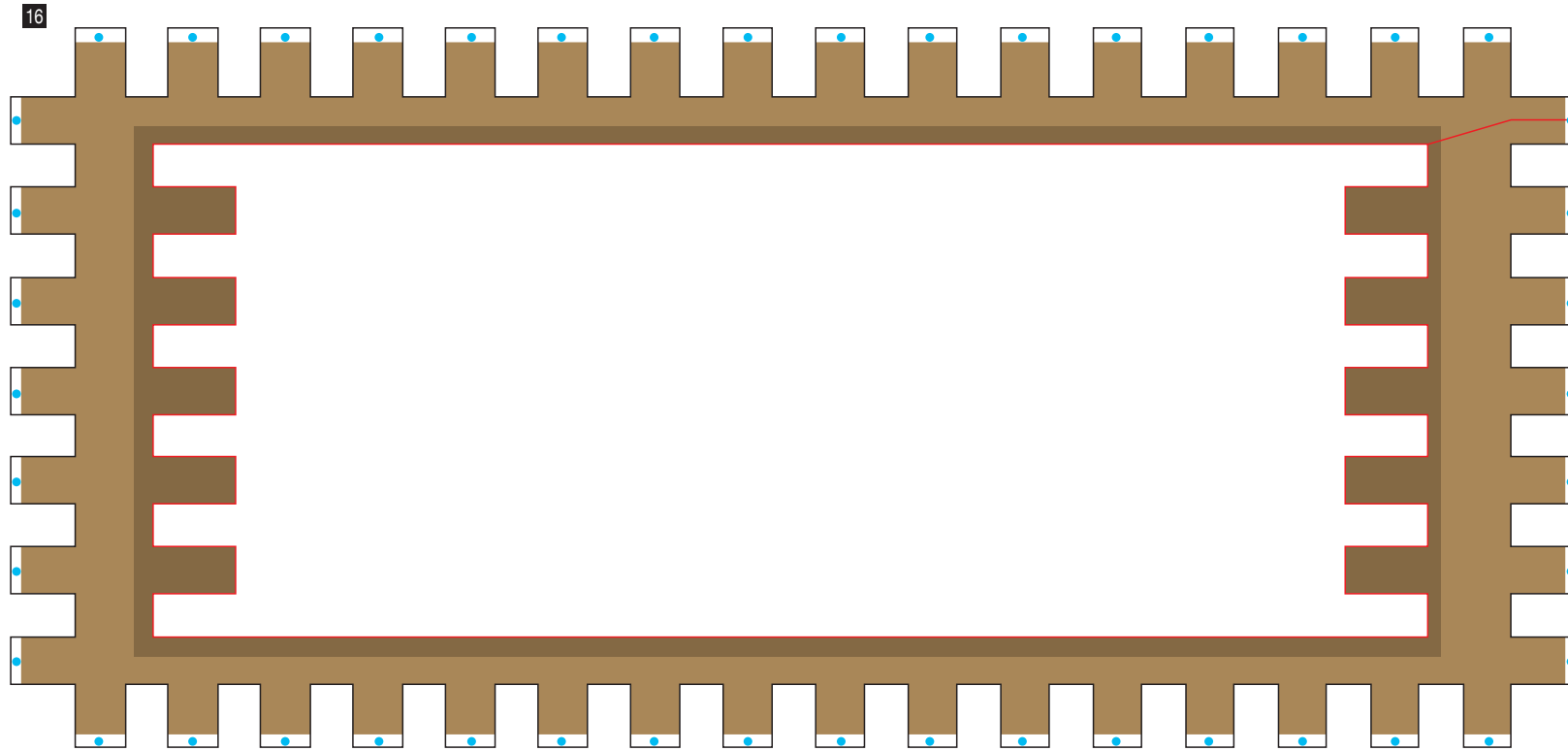
The Parthenon, Greece: Pattern

Canon ® is a registered trademark of Canon Inc. © Canon Inc. © A & A Co., Ltd.



The Parthenon, Greece: Pattern

Canon ® is a registered trademark of Canon Inc. © Canon Inc. © A & A Co., Ltd.

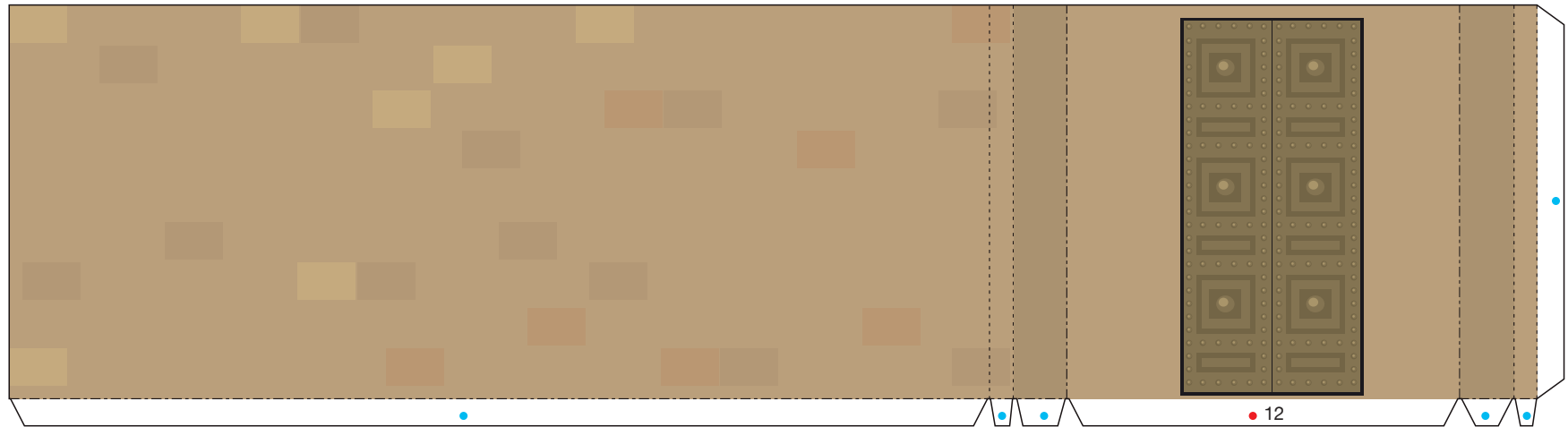


The Parthenon, Greece: Pattern

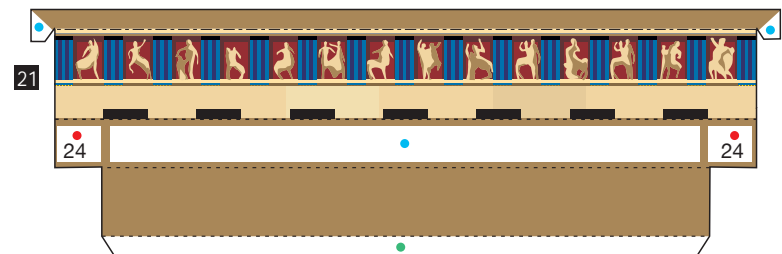
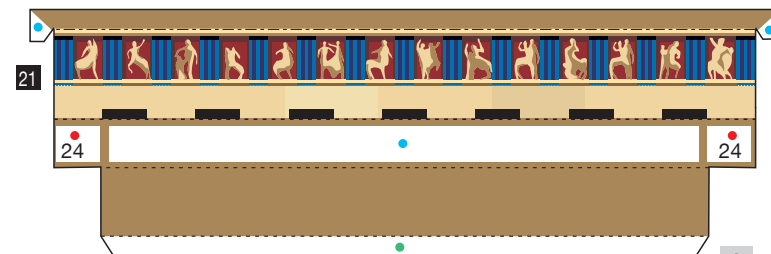
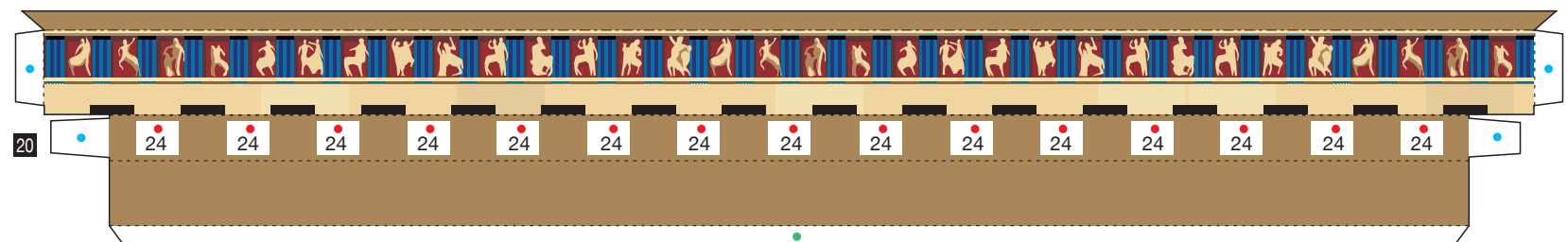
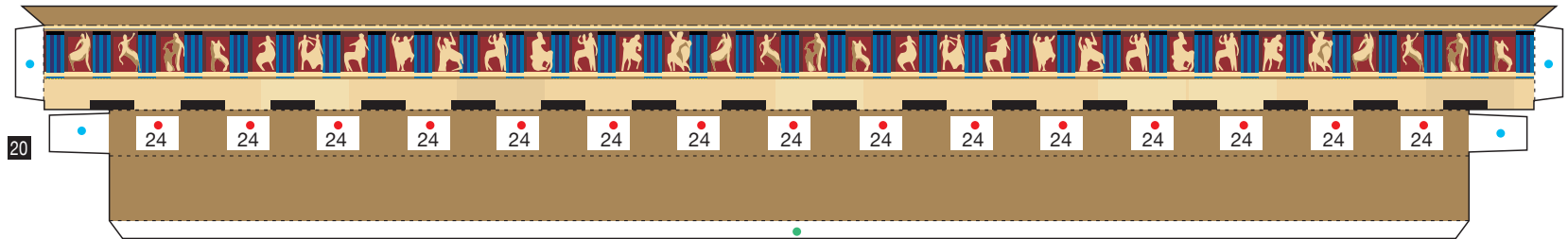
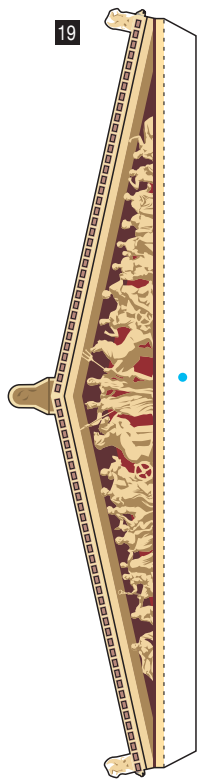
Canon® is a registered trademark of Canon Inc. © Canon Inc. © A & A Co., Ltd.



17



19



The Parthenon, Greece: Pattern

Canon ® is a registered trademark of Canon Inc. © Canon Inc. © A & A Co., Ltd.



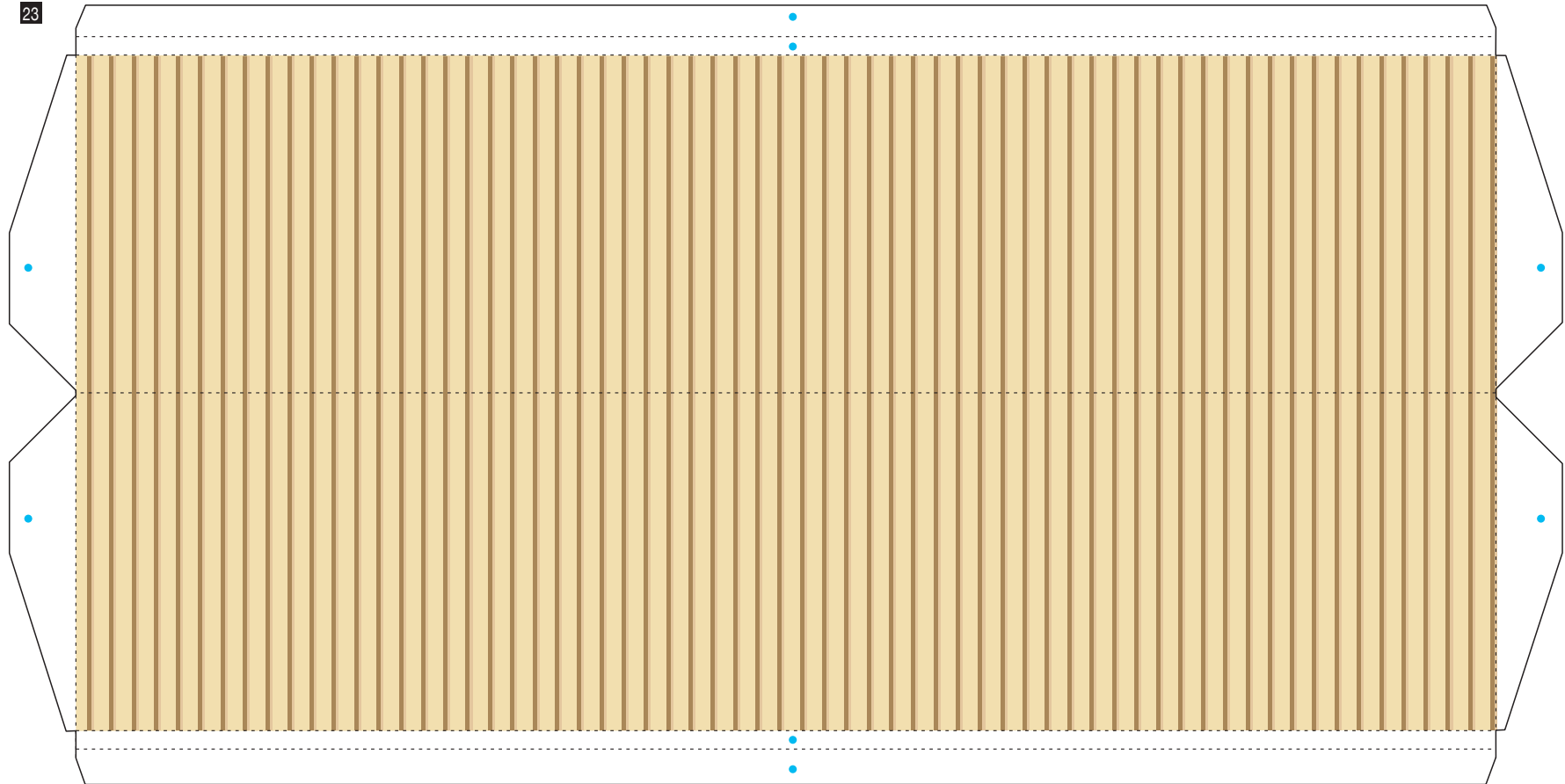
22



22



23

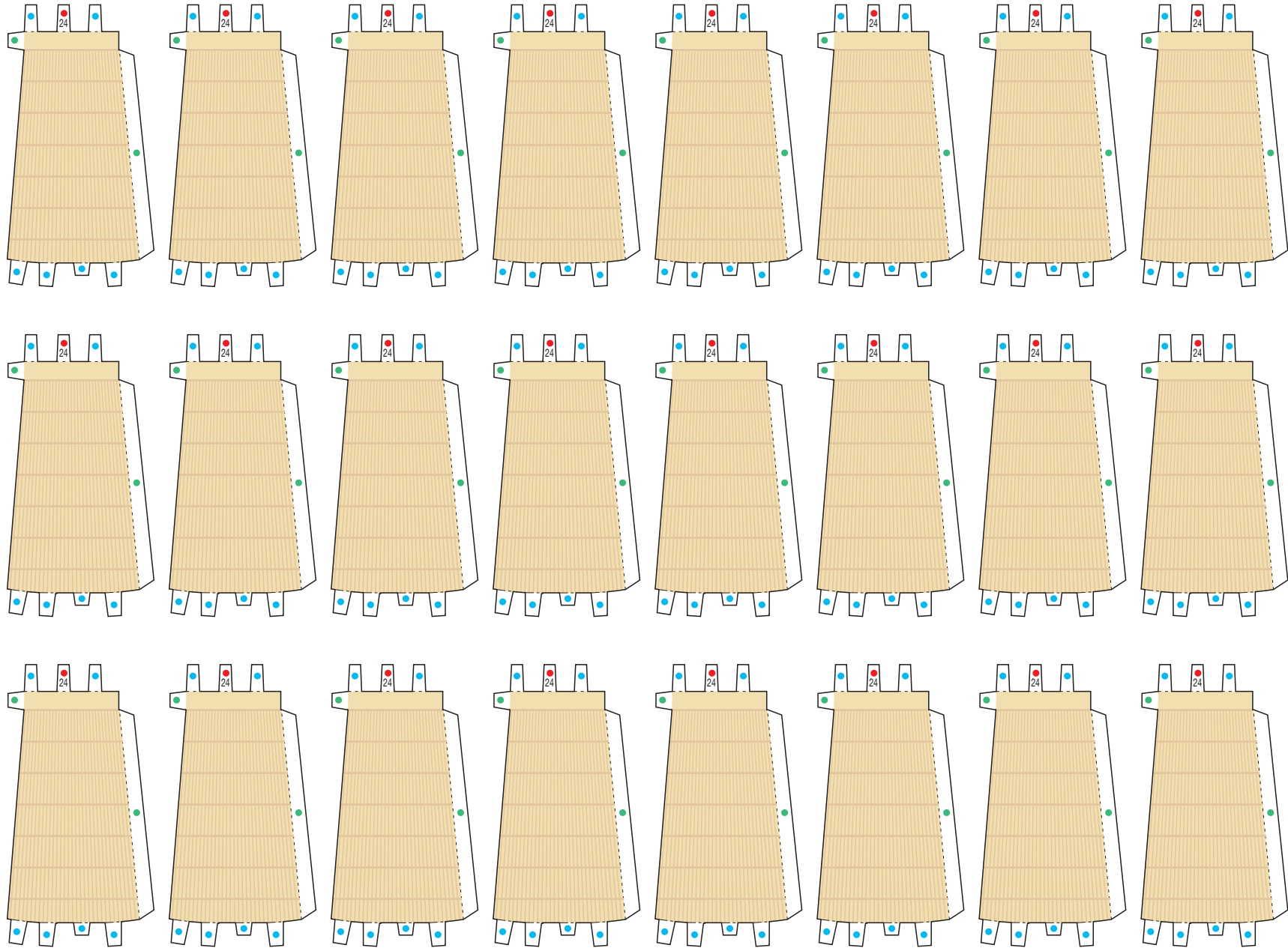


The Parthenon, Greece: Pattern

Canon® is a registered trademark of Canon Inc. © Canon Inc. © A & A Co., Ltd.



24

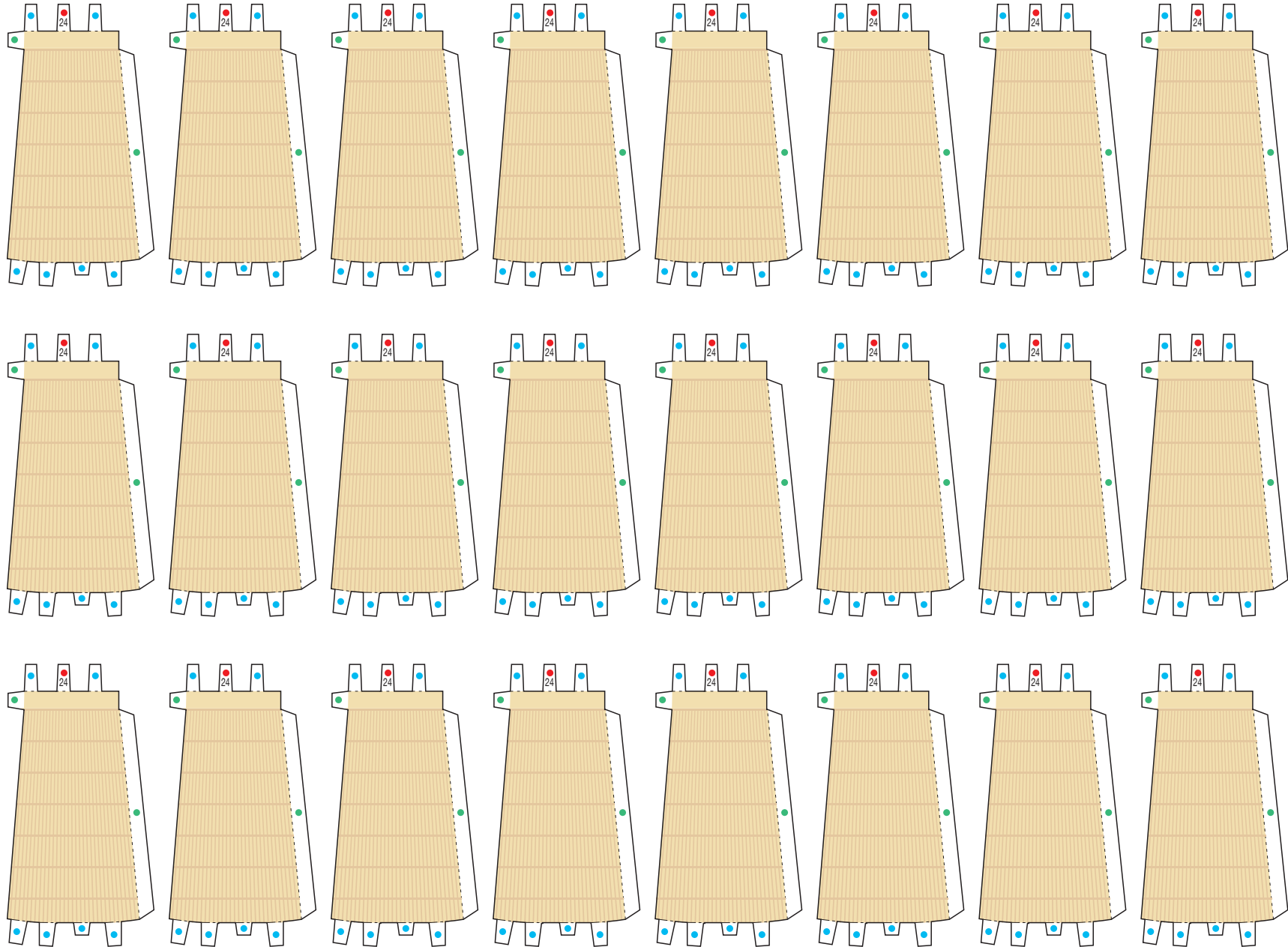


The Parthenon, Greece: Pattern

Canon ® is a registered trademark of Canon Inc. © Canon Inc. © A & A Co., Ltd.



24

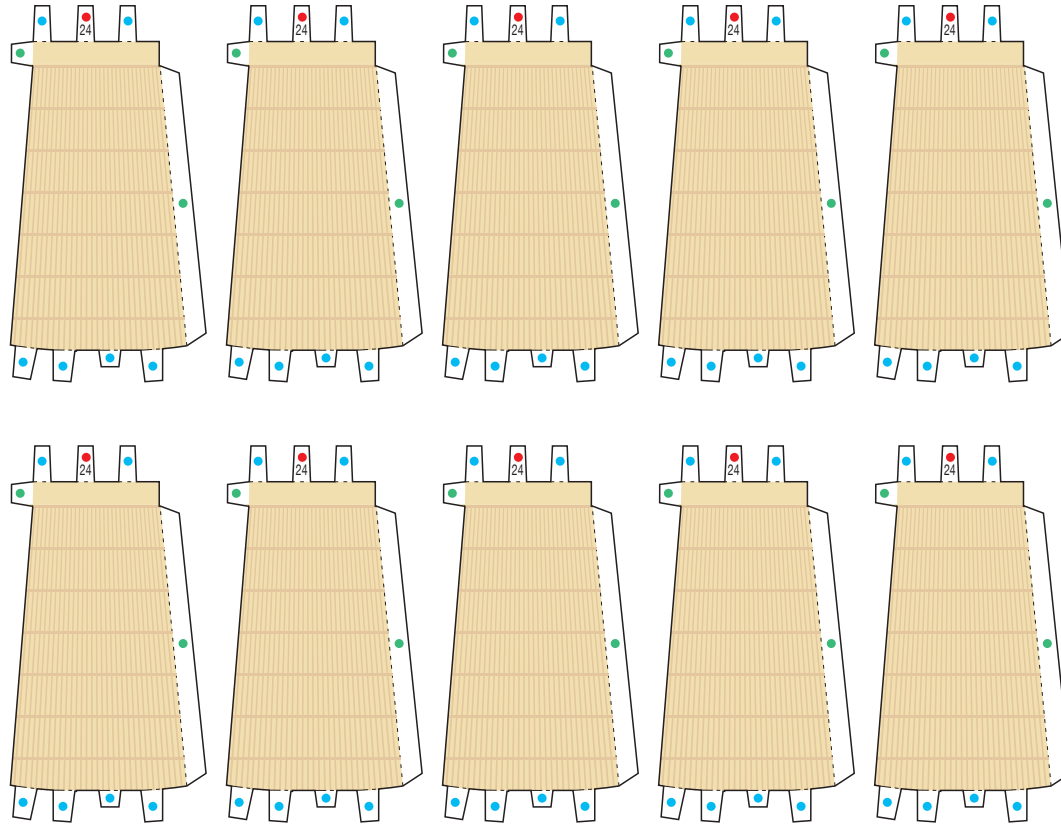


The Parthenon, Greece: Pattern

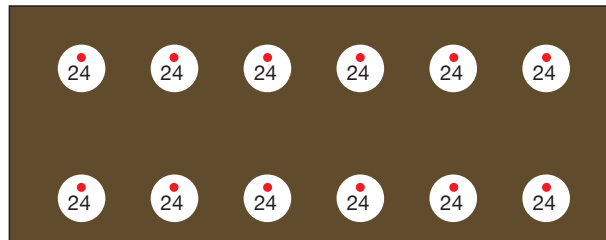
Canon ® is a registered trademark of Canon Inc. © Canon Inc. © A & A Co., Ltd.



24



25



25

